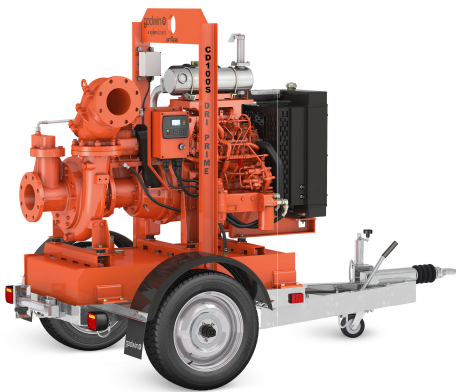


# Godwin CD100S Dri-Prime® Pump



The Godwin CD100S Dri-Prime pump is a versatile, general purpose dewatering pump designed for use in the industry's most challenging construction, municipal, industrial and emergency response applications. This rugged pump is ideally suited for tough dewatering jobs, and is the reliable choice for rental solutions.

The CD100S is a member of the Godwin S Series of Smart pumps, equipped with a new generation of Field Smart Technology (FST) for remote monitoring and control. In addition to improved hydraulic efficiency, greater fuel economy, and streamlined serviceability, the CD100S impeller is interchangeable with a Flygt N-Technology non-clog impeller, providing the flexibility to tackle stringy, modern wastewater applications with the same pump.

## Specifications

Suction connection	100 mm (4 in) flange
Delivery connection	100 mm (4 in) flange
Max capacity	245 m <sup>3</sup> /hr (1,065 USGPM) <sup>1</sup>
Max impeller diameter	254 mm (10 in)
Max solids handling	45 mm (1 3/4 in)
Max operating temperature	80°C (176°F) <sup>2</sup>
Max pressure	4.7 bar (68 psi)
Max suction pressure	4.0 bar (58 psi)
Max casing pressure	7.1 bar (103 psi)
Max operating speed	2200 rpm

<sup>1</sup> Larger diameter pipes may be required for maximum flows.

<sup>2</sup> Please contact our sales and product support for applications in excess of 80°C (176°F).

## Features and benefits

- Interchangeable impellers to tackle a full range of solids handling applications.
- Field Smart Technology (FST) allows the user to monitor & control the pump from anywhere in the world.
- New compressor belt tensioner reduces time to change and adjust belt to approximately 30 minutes.
- New sight glass and measuring stick added to monitor mechanical seal oil level and quality.
- Improved hydraulic design reduces vibration, maximizes efficiency and fuel economy.
- Fully automatic priming from dry to 8.5 m (28 ft).
- Venturi priming requires no adjustment or control.
- Available as Open Skidbase or Sound Attenuated Enclosure, both of which can be trailer mounted.
- Standard engines are compliant with regional emissions legislation.
- Other engine options available.
- Environmentally friendly skid base, that contains fluid spills, comes as standard.

# Godwin CD100S Dri-Prime® Pump



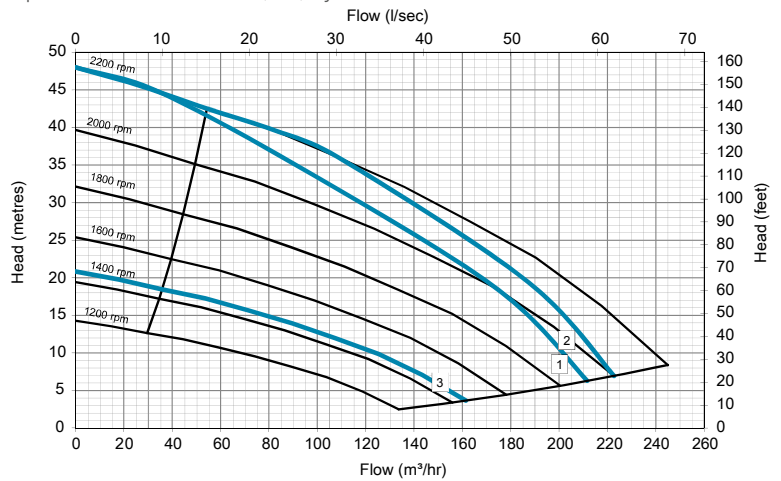
## Suction lift table 1800 rpm

Performance data provided in tables is based on water tests at sea level and 20 °C (68°F) ambient.

Total suction head (metre)	Total delivery head (metre)				
	3	7	11	15	20
	Output (m <sup>3</sup> /hr)				
3.0	200	182	162	136	98
4.6	192	174	153	125	85
6.1	186	167	143	114	71
7.6	179	159	132	102	55

## Performance curve

Pump curve is based on 0 m (0 ft) dynamic suction lift.

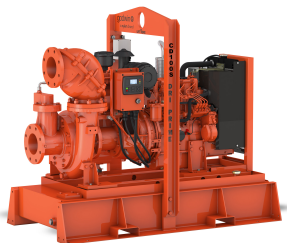


## Materials

Pump casing	Cast Iron BS EN 1561/EN-JL1030
Wearplates	Cast Iron BS1561:1997
Pump shaft	Carbon steel BS970:1991 817M40T
Impeller	Cast Steel BS3100 A5 Hardness to 200 HB Brinell
Mechanical seal faces	Silicon carbide Vs Silicon carbide

## Driver options

Option	Driver	Power kW (hp)	Fuel / Energy Use 1800 rpm	Emissions Rating
1	Perkins 403J-17	18 (24)	5.5 L/hr	EU Stage 5
2	Perkins 403D-15	24.4 (33)	4 L/hr	EU Stage 3A
3	Electric Motor, 4 Pole, 50 Hz	11 (15)	12.5 A	IE 3



## Open skidbase

Information provided is based on the Perkins 403J-17.

Fuel capacity	140 L (37 US Gal)
Weight dry	970 kg (2140 lb)
Weight wet	1115 kg (2460 lb)
Dimensions (L x W x H)	1,800 mm x 930 mm x 1,390 mm (71 in x 37 in x 55 in)

## Sound attenuated enclosure

Information provided is based on the Perkins 403J-17.

Noise @ 23 ft (7 m)	64 dBA
Fuel capacity	148 L (39 US Gal)
Weight dry	1,190 kg (2,625 lb)
Weight wet	1,325 kg (2,920 lb)
Dimensions (L x W x H)	1,850 mm x 900 mm x 1,450 mm (73 in x 36 in x 57 in)