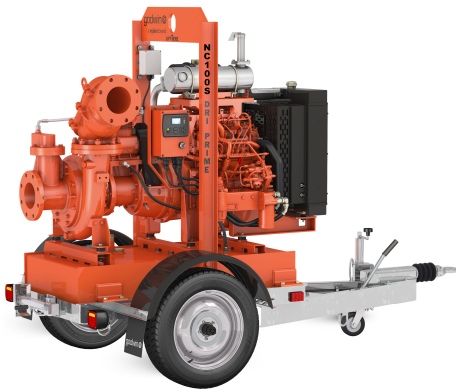


# Godwin NC100S Dri-Prime® Pump



The Godwin NC100S Dri-Prime pump is designed for use in municipal wastewater applications that contain stringy, modern waste. This unique self-cleaning, non-clog pump is recommended for sewer, lift station, and bypass applications, and is ideal for permanent installations where reliability is absolutely critical, e.g. Diesel Backup Systems (DBS).

The NC100S is a member of the Godwin S Series of Smart pumps, which feature greater fuel economy, easier operation, and reduced maintenance. In addition, the Flygt N-Technology non-clog (NC) impeller is interchangeable with the CD impeller, providing the flexibility to tackle general dewatering applications with the same pump.

The Field Smart Technology (FST) is standard on every S series pump, providing real-time remote monitoring and control.

## Specifications

Suction connection	100 mm (4 in) flange
Delivery connection	100 mm (4 in) flange
Max capacity	245 m <sup>3</sup> /hr (1,065 USGPM) <sup>1</sup>
Max impeller diameter	254 mm (10 in)
Max operating temperature	80°C (176°F) <sup>2</sup>
Max pressure	4.7 bar (68 psi)
Max suction pressure	4.0 bar (58 psi)
Max casing pressure	7.1 bar (103 psi)
Max operating speed	2200 rpm

<sup>1</sup> Larger diameter pipes may be required for maximum flows.

<sup>2</sup> Please contact our sales and product support for applications in excess of 80°C (176°F).

## Features and benefits

- Flygt 'non-clog' N-Technology to avoid ragging and downtime caused by modern waste.
- Field Smart Technology (FST) allows the user to monitor & control the pump from anywhere in the world.
- New compressor belt tensioner reduces time to change and adjust belt to approximately 30 minutes.
- New sight glass and measuring stick added to monitor mechanical seal oil level and quality.
- Improved hydraulic design reduces vibration, maximizes efficiency and fuel economy.
- Fully automatic priming from dry to 8.5 m (28 ft).
- Venturi priming requires no adjustment or control.
- Available as Open Skidbase or Sound Attenuated Enclosure, both of which can be trailer mounted.
- Standard engines are compliant with regional emissions legislation.
- Other engine options available.
- Environmentally friendly skid base, that contains fluid spills, comes as standard.

# Godwin NC100S Dri-Prime® Pump



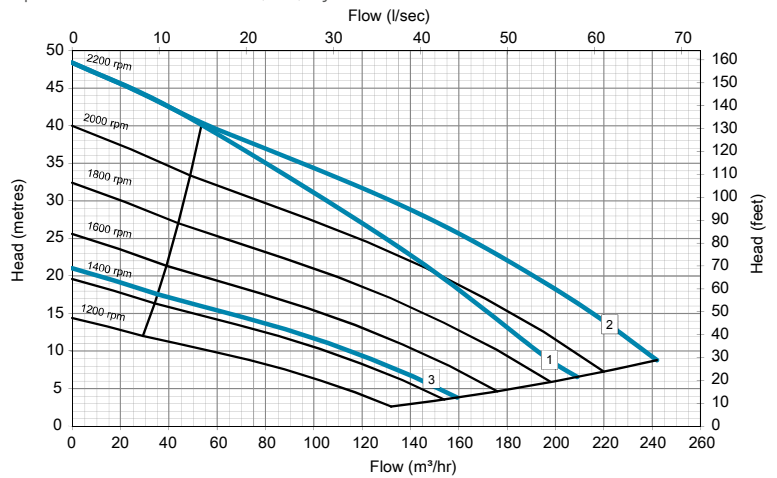
## Suction lift table 1800 rpm

Performance data provided in tables is based on water tests at sea level and 20°C (68°F) ambient.

Total suction head (metre)	Total delivery head (metre)				
	3	7	11	15	19
	Output (m <sup>3</sup> /hr)				
3.0	197	177	152	124	91
4.6	189	167	142	112	76
6.1	181	158	131	99	62
7.6	145	135	120	86	48

## Performance curve

Pump curve is based on 0 m (0 ft) dynamic suction lift.

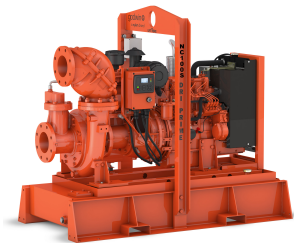


## Materials

Pump casing	Cast Iron BS EN 1561/EN-JL1030
Wearplates	Cast Iron BS1561:1997
Pump shaft	Carbon steel BS970:1991 817M40T
Impeller	Cast Steel BS3100 A5 Hardness to 200 HB Brinell
Mechanical seal faces	Silicon carbide Vs Silicon carbide

## Driver options

Option	Driver	Power kW (hp)	Fuel / Energy Use 1800 rpm	Emissions Rating
1	Perkins 403J-17	18 (24)	5.5 L/hr	EU Stage 5
2	Perkins 404D-22T	46 (62)	3.8 L/hr	EU Stage 3A
3	Electric Motor, 4 Pole, 50 Hz	11 (15)	12.5 L/hr	IE 3



## Open skidbase

Information provided is based on the Perkins 404D-22T.

Fuel capacity	140 L (37 US Gal)
Weight dry	1000 kg (2,205 lb)
Weight wet	1,145 kg (2,525 lb)
Dimensions (L x W x H)	1,800 mm x 930 mm x 1,390 mm (71 in x 37 in x 55 in)

## Sound attenuated enclosure

Information provided is based on the Perkins 404D-22T.

Noise @ 23 ft (7 m)	65 dBA
Fuel capacity	150 L (40 US Gal)
Weight dry	1,380 kg (3,045 lb)
Weight wet	1,510 kg (3,330 lb)
Dimensions (L x W x H)	2,460 mm x 1,045 mm x 1,745 mm (97 in x 41 in x 69 in)