

DEWATERING AUTOPRIME

SPP PUMPS BOX CANOPY RANGE



DEWATERING AUTOPRIME

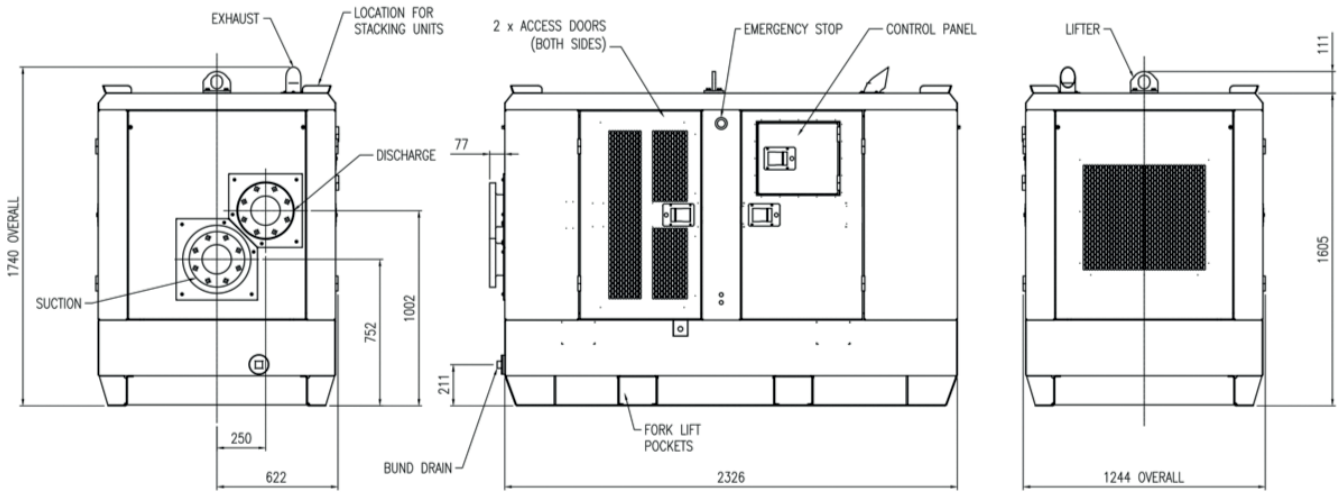
SPP PUMPS BOX CANOPY RANGE

Unique style, lightweight, robust, reliable and proven vacuum assisted pumping technology from an internationally recognised brand name. Applications include general purpose dewatering, over pumping, sewer bypass, industrial and municipal pumping applications, where reliable and fully automatic prime and reprime is required with minimal operator interface.



DESIGN FEATURES

- Tier III emissions compliant engines
- Fully bundled one piece "BOX" design leak-free chassis with 110% liquid containment
- Four large access doors
- Heavy duty integral fuel tanks, with flushing/draining points
- Fork lift slots, 4 staking corners and a central point lifting point
- DSEE400 control panel with Auto stop/start control feature enabled as standard. Simple to configure with large LCD display, full control and engine diagnostics
- Twin mechanical seals, flood lubricated for continuous dry running
- Fully automatic "Smart" prime and re-prime system. The unique and versatile "single" probe allows the priming system to be used on a variety of applications
- 65cfm (110m³/hr) rotary vane vacuum pump system
- Central lifter rated to lift the complete enclosure
- Emergency stop fitted as standard
- Able to accept high suction pressures of up to 6 bar without modification means that the pumps can be operated in series on applications requiring higher pressure output
- Standard 2 way valve connector for easy connection of external bulk fuel tank
- Stackable up to 3 units high



Weight 2100kg

PUMP SPECIFICATIONS

PUMP TYPE	MAX Q m ³ /hr	MAX HEAD m	MAX WORKING PRESSURE BAR	SUCTION HOSE mm	DISCHARGE HOSE mm	MAX SOLIDS SIZE mm x mm	DIESEL ENGINE MAKE & MODEL	SOUND PRESSURE d(B)A @7m	FUEL CONSUMPTION 2000 rpm Avg l/hr	RUNNING TIME Av hrs
HH80	120	90	10	80-100 (3"-4")	80 (3")	20	Yanmar 4TNV88	<60	3.4	65
100	200	28	10	100 (4")	100 (4")	40x65	Yanmar 3TNV88	<60	1.5	146
100M	255	52	10	100-150 (4"-6")	100 (4")	40x75	Yanmar 4TNV88	<60	3.4	65
150	330	27	10	150 (6")	150 (6")	85x80	Yanmar 3TNV88	<60	3.2	69
150M	430	37	10	150-200 (6"-8")	150 (6")	65x80	Yanmar 4TNV88	<60	3.4	65
200	522	32	10	200 (8")	200 (8")	75x90	Yanmar 4TNV88	<60	4.5	50
200(S)	378	42	10	150-200 (6"-8")	150-200 (6"-8")	100	Yanmar 4TNV88	<60	4.5	50



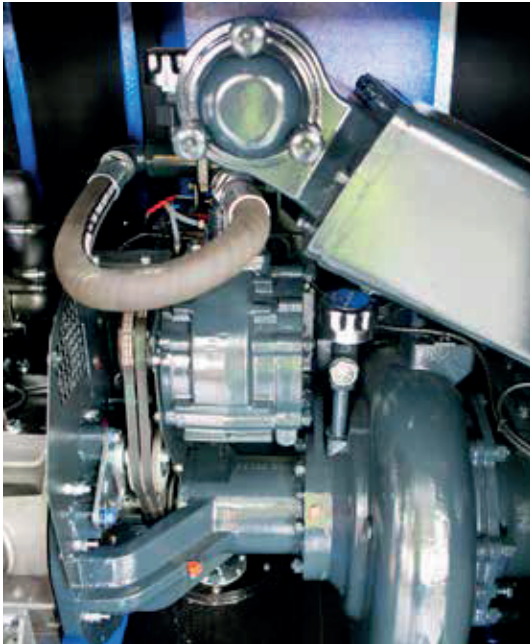
FOR WHERE IT REALLY MATTERS

OPTIONAL EXTRAS

- Pump Telemetry.
- Spark arrestor and Chalwyn valve.
- Battery isolator.
- Optional colour to suit customer branding.
- Optional single vane/solids handling internals.
- Optional 316 Stainless Steel internals.
- Service & Maintenance package.
- Spares kit.

MATERIALS OF CONSTRUCTION

PUMP CASING	Cast Iron (GJL-250)
IMPELLER	SG Iron (GJS-500-7)
PUMP SHAFT	St St (316)
WEAR PLATES	Cast Iron (GJL-250)
SUCTION SUMP	Cast Iron (GJL-250)
PRIMING TANK	Aluminium
SHAFT SEALING	Twin Mech Seals
MECH. SEALS	Silicon Carbide / Silicon Carbide
ELASTOMERS	Viton
NON RETURN VALVE	Flap type



TO ORDER OR FIND OUT MORE CONTACT...

Tel: +44 (0)1594 832701
 Email: dewatering@sppumps.com
www.sppumps.com/divisions/dewatering/

Crucible Close,
 Musher Industrial Park,
 Coleford, GL16 8PS



Assessed to ISO 9001
 Cer/LPCB ref. 111



ISO 9001 FS 704693
 ISO 14001 EMS 704692
 OHSAS 18001 OHS 704691



SPP Pumps reserve the right to continually develop and improve products. Information contained herein is for guidance only and subject to change. SPP Pumps Ltd accept no liability whatsoever for any damages either direct or consequential resulting from the use of such information.

* Applies to: Coleford Manufacturing Site, Northern Service Centre and Wales & West Service Centre. SPP Pumps are proud to be working towards achieving this accreditation at all sites.