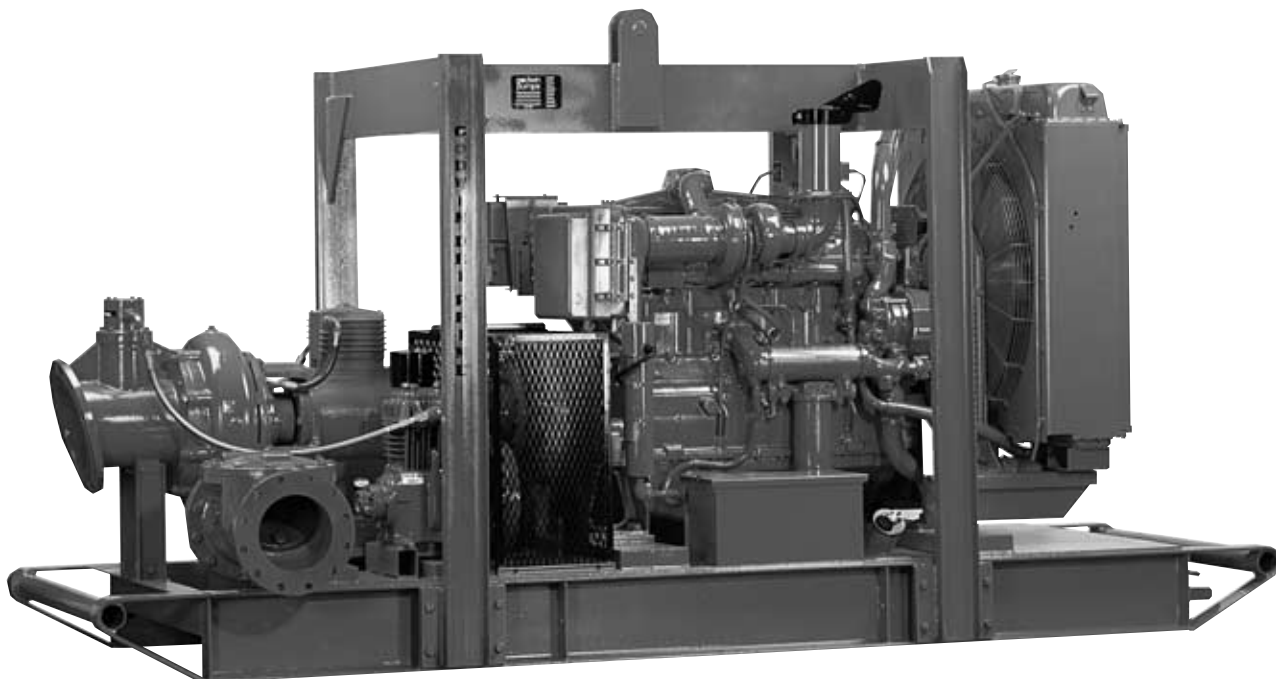


HL8M Dri-Prime® Pumps



The Godwin Dri-Prime 250mm x 200mm (10" x 8") HL8M is a heavy duty, fully automatic self-priming pump specifically offered for pumping under discharge pressure conditions or high discharge lift applications. The HL8M offers flow rates up to 680 M³/hr (185 l/sec), total dynamic heads up to 95 meters (310'), and solids handling up to 75mm (3") in diameter. Like all Godwin pumps, the HL8M includes the Dri-Prime air ejector priming system for fully automatic priming up to 8.5 meters of static suction lift.

Features

- Fully automatic priming from dry to 8.5 meters (28') of suction lift. Maximum heads to 95 meters (310 feet). Maximum flows to 680 cubic meters per hour.
- Handles sludges and solids-laden liquids with solids up to 75mm (3") in diameter.
- Continuously operated venturi air ejector priming system operated by belt-driven air compressor requiring no form of periodic adjustment or operator intervention.
- Dual, high pressure, dry running solid silicon carbide inboard and carbon/stainless outboard mechanical seal with self-contained water/glycol circulating thermo-siphoning cooling.
- Mounted to a structural steel skid with integral 530/946 liter (140/250 gallon) fuel tank and lifting bail.
- Standard engine — Caterpillar, Volvo or John Deere. Also available with other engines including Deutz and Cummins.

HL8M Technical Specification

Standard pump material specification

Pump Casing / Separation Tank	Impeller	Wear Plates	Shaft	Engine Adaptor	NRV Body	Ball & Seat	Mechanical Seal	Pump End Bearing	Drive End Bearing	Priming Method
Cast Iron to BS1452 Grade 220	Cast Steel BS3100 A5 Hardness to 200 HB Brinell	Cast Iron - Chrome 1.0/1.5%, Nickle 2%	Nickel Chrome Steel to BS 970 Grade M40 EN241	Cast Iron to BS1452 Grade 220	Cast Iron	High Nitrile Rubber	Silicon Carbide vs Silicon Carbide	Roller	Roller	Air compressor / Dri-Prime system
Notes: Alternative material specification available on request										

Bearing Details

Technical Details:

Suction:	250mm (10") Table 'D'	Maximum Operating Temperature	80 °C
Discharge:	200mm PN16	Maximum Working Pressure	10 Bar
Maximum Capacity	850 M3/hr	Maximum Suction Pressure	4.13 Bar
Maximum Head	97 Meters	Maximum Test Pressure	15 Bar
Maximum Solids handling:	75 mm	Maximum Operating Speed	1800 RPM
Impeller Type	Fully open	Normal Operating Speed	1700 RPM
Number of Blades	3	Minimum Operating Speed	1200 RPM
Maximum Impeller Diameter	430 mm	Standard compressor absorbs	3.5 KW

Diesel Set - Performance :

Volvo		TD1240VE-275		265kw @ 1800RPM		
		Total Delivery Head				
Total Suction Head - Meters		70	75	80	85	90
		Output M3/hr				
3.0	770	700	605	550	500	0
4.6	720	650	600	500	370	
6.1	625	600	580	490	300	
7.6	460	420	400	390	--	

Impeller Dia: 430 mm

Performance data provided in tables is based on water tests at sea level and 20 deg c ambient.

Running Period :	11 Hours	Normal Operating speed
Fuel tank capacity	730 Litres	
Approximate weight	4130 Kgs (DRY)	
	4726 Kgs (WET)	

Approximate Dimensions:	Length	4760 mm
	Width	1650 mm
	Height	2375 mm

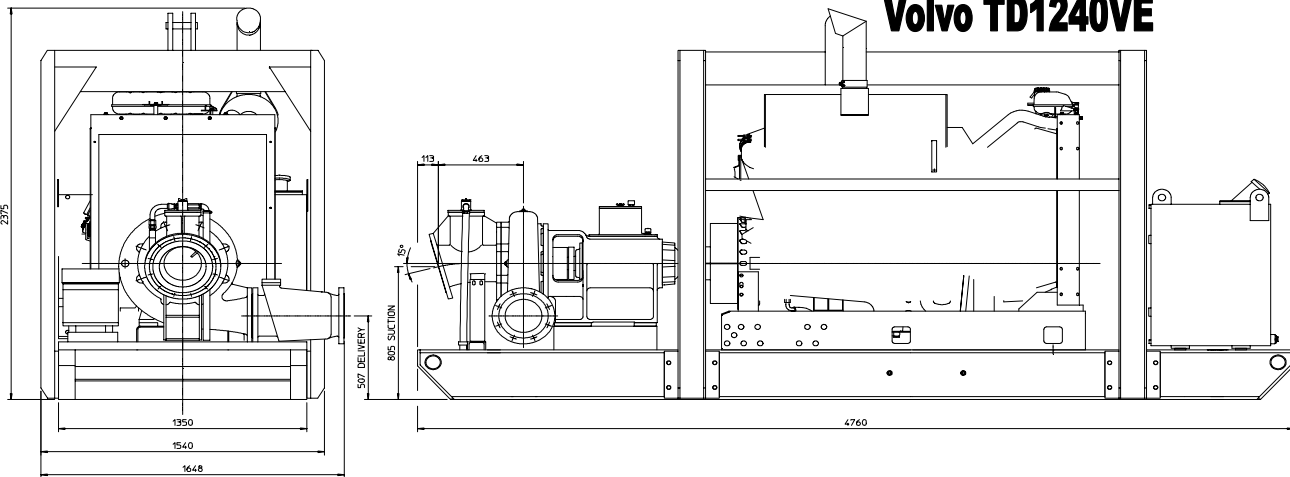
Caterpillar		C12		277kw @ 1800RPM		
		Total Delivery Head				
Total Suction Head - Feet		70	75	80	85	90
		Output GPM				
3.0	770	700	605	550	500	0
4.6	720	650	600	500	370	
6.1	625	600	580	490	300	
7.6	460	420	400	390	--	

Impeller Dia: 0 mm

Performance data provided in tables is based on water tests at sea level and 20 deg c ambient.

Running Period :	10 Hours	Normal Operating speed
Fuel tank capacity	730 Litres	
Approximate weight	3725 Kgs (DRY)	
	4321 Kgs (WET)	

Approximate Dimensions:	Length	4760 mm
	Width	1650 mm
	Height	2375 mm



Volvo TD1240VE

Alternative options available. Please Contact Godwin Pumps Ltd for details.

Reference Number	HL8M_A
Issue	2

Godwin Pumps Limited
 Quenington, Cirencester,
 Gloucestershire GL7 5BX, England
 Tel: 01285 750271 Fax: 01285 750352
 E-mail: sales@godwinpumps.co.uk
 Web Site www.godwinpumps.co.uk



Assessed to ISO 9001:2000
 Certificate No. 224





Pump Type	HL8M
Curve No	HL8M VAR
Branch Sizes	250 x 200mm
Date	11.04.2005
Speed	VARIABLE

