

Technical
specification



Submersible pump C 3201, 50 Hz

FLYGT
a xylem brand



C 3201

Product

Submersible pump for pumping clean water, surface water and waste water containing solids or long-fibred material.

Denomination

Product code	3201.180
Installation	P, S, T, Z
Impeller characteristics	LT, MT, HT, SH

Process data

Liquid temperature	max +40 °C
Depth of immersion	max 20 m
The pH of the pumped liquid	pH 5,5-14
Liquid density	max. 1100 kg/m ³
Impeller throughlet	See Motor rating table

Motor data

Frequency	50 Hz
Insulation class	H (+180 °C)
Voltage variation	
- continuously running	max ± 5%
- intermittent running	max ± 10%
Voltage imbalance between phases	max 2%
No. of starts/hour	max 30

Cable

Direct-on-line start

SUBCAB®	4G10+2x1,5 mm ²
	4G16+2x1,5 mm ²

SUBCAB®	4G25 mm ²
	4G25+2x1,5 mm ²
	4G35 mm ²
	4G35+2x1,5 mm ²

Y/D start

SUBCAB®	2x4G10+2x1,5 mm ²
	7G6+2x1,5 mm ²

Monitoring equipment

Thermal contacts opening temperature	125 °C
--------------------------------------	--------

Material

Impeller	Cast iron
Pump housing	Cast iron
Stator housing	Cast iron
Shaft	Carbon steel
O-rings	Nitrile rubber

Mechanical face seals

Alternative	Inner seal	Outer seal
1	Corrosion resistant cemented carbide/ Corrosion resistant cemented carbide	Corrosion resistant cemented carbide/ Corrosion resistant cemented carbide

Surface Treatment

All cast parts are primed with a water-borne primer. The finishing coat is a high-solid two pack paint.

Weight

See dimensional drawing.

Option

3201.091	Ex. proof design
3201.280	Stainless steel design
3201.290	Stainless steel/Ex proof design
Warm liquid version on request	
Leakage sensor in stator housing	FLS
Leakage sensor in oil housing	CLS
Surface treatment	Epoxy treatment
Other cables	
Zinc anodes	

Accessories

Discharge connections, adapters, hose connections and other mechanical accessories.

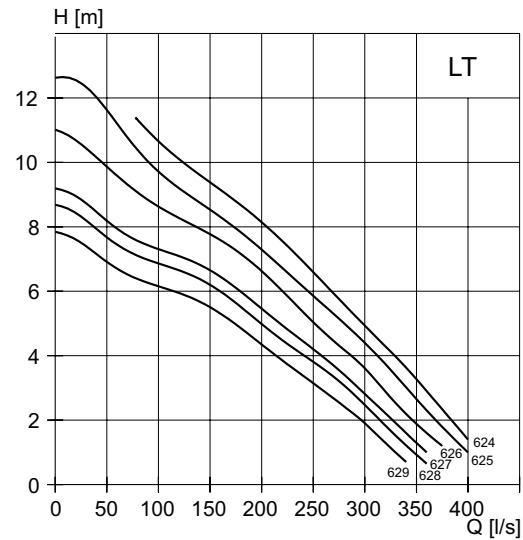
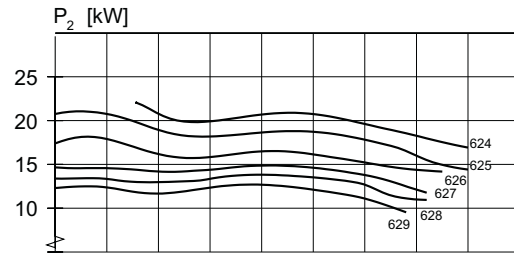
Electrical accessories such as pump controller, control panels, starters, monitoring relays, cables.

See separate booklet or www.xyleminc.com, for further information.

LT-Motor rating and performance curve

Curve/Impeller No	Rated power, kW	Rated current, A	Starting current, A	Power factor cos φ	Impeller thoughtlet, mm	Ex proof version available	Installation			
							P	S	T	Z
400 V, 50 Hz, 3 ~, 970 r/min										
624	22,0	45	300	0,82	102	•	•	•	•	•
625	22,0	45	300	0,82	102	•	•	•	•	•
626	22,0	45	300	0,82	102	•	•	•	•	•
627	22,0	45	300	0,82	102	•	•	•	•	•
628	22,0	45	300	0,82	102	•	•	•	•	•
629	22,0	45	300	0,82	102	•	•	•	•	•

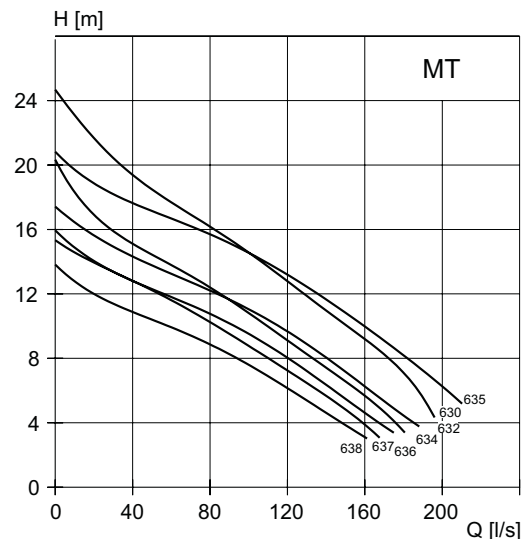
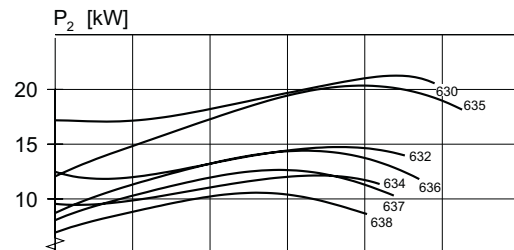
Y/D starting current is approximately 1/3 of D starting current.



MT-Motor rating and performance curve

Curve/Impeller No	Rated power, kW	Rated current, A	Starting current, A	Power factor cos φ	Impeller thoughtlet, mm	Ex proof version available	Installation			
							P	S	T	Z
400 V, 50 Hz, 3 ~, 970 r/min										
630	22,0	45	300	0,82	84	•	•	•	•	•
632	22,0	45	300	0,82	84	•	•	•	•	•
634	22,0	45	300	0,82	84	•	•	•	•	•
635	22,0	45	300	0,82	84	•	•	•	•	•
636	22,0	45	300	0,82	84	•	•	•	•	•
637	22,0	45	300	0,82	84	•	•	•	•	•
638	22,0	45	300	0,82	84	•	•	•	•	•

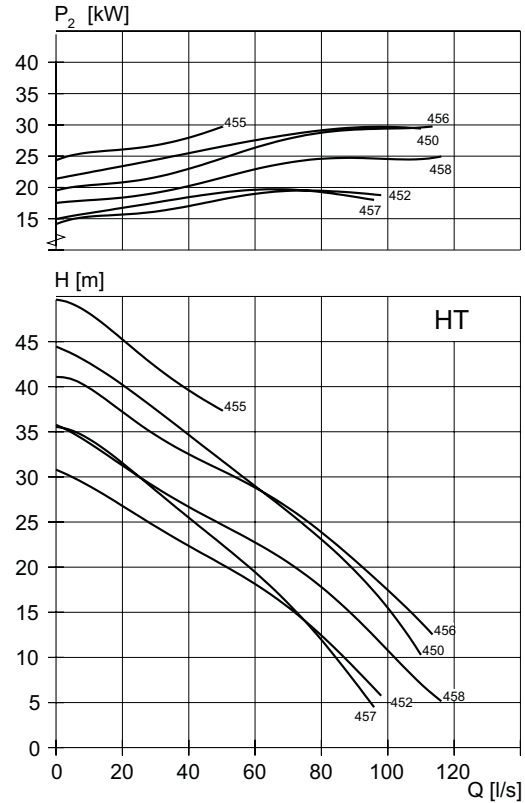
Y/D starting current is approximately 1/3 of D starting current.



HT-Motor rating and performance curve

Curve/Impeller No	Rated power, kW	Rated current, A	Starting current, A	Power factor cos φ	Impeller thoughtlet, mm	Ex proof version available	Installation			
							P	S	T	Z
400 V, 50 Hz, 3 ~, 1460 r/min										
452	22	42	300	0,87	77	•	•	•	•	•
457	22	42	300	0,87	100	•	•	•	•	•
400 V, 50 Hz, 3 ~, 1455 r/min										
450	30	56	365	0,88	77	•	•	•	•	•
452	30	56	365	0,88	77	•	•	•	•	•
455	30	56	365	0,88	100	•	•	•	•	•
456	30	56	365	0,88	100	•	•	•	•	•
457	30	56	365	0,88	100	•	•	•	•	•

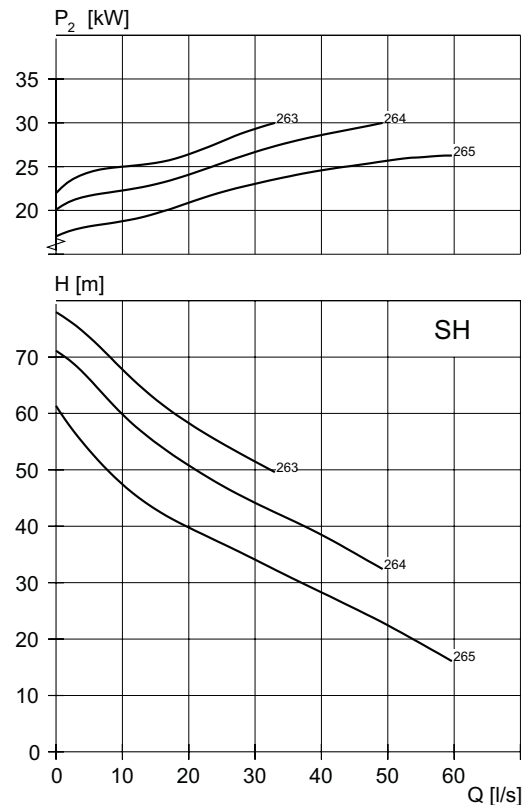
Y/D starting current is approximately 1/3 of D starting current.



SH-Motor rating and performance curve

Curve/Impeller No	Rated power, kW	Rated current, A	Starting current, A	Power factor cos φ	Impeller thoughtlet, mm	Ex proof version available	Installation			
							P	S	T	Z
400 V, 50 Hz, 3 ~, 2970 r/min										
263	30	52	385	0,94	76	•	•	•	•	•
264	30	52	385	0,94	76	•	•	•	•	•
265	30	52	385	0,94	76	•	•	•	•	•

Y/D starting current is approximately 1/3 of D starting current.



Dimensional drawing

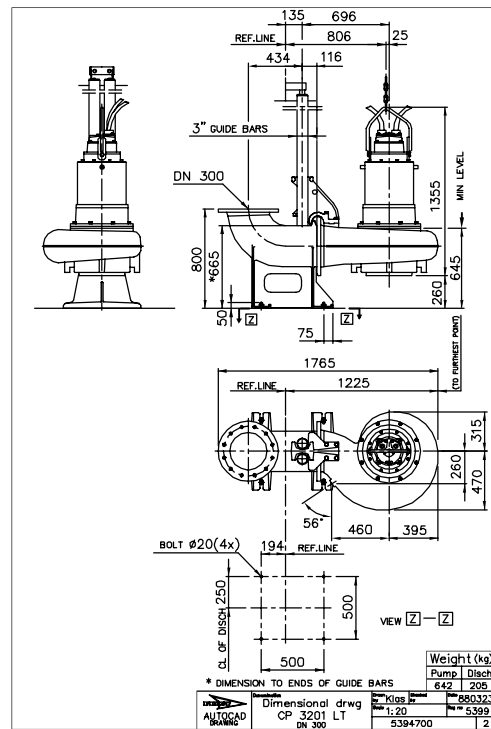
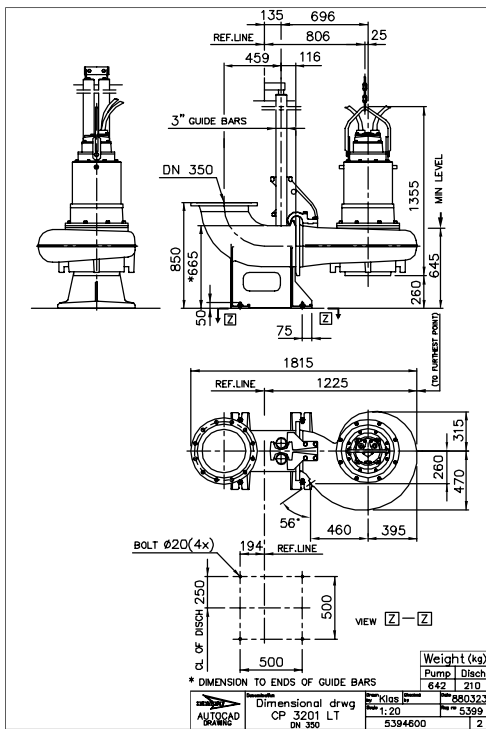
All drawings are available as Acrobat documents (.pdf) and AutoCad drawings (.dwg).

Contact your Xylem representative for more information.

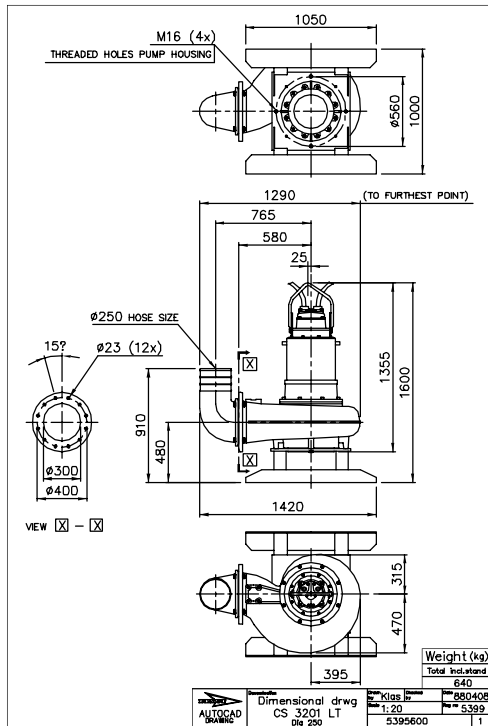
All dimensions are in mm.

LT, P-installation

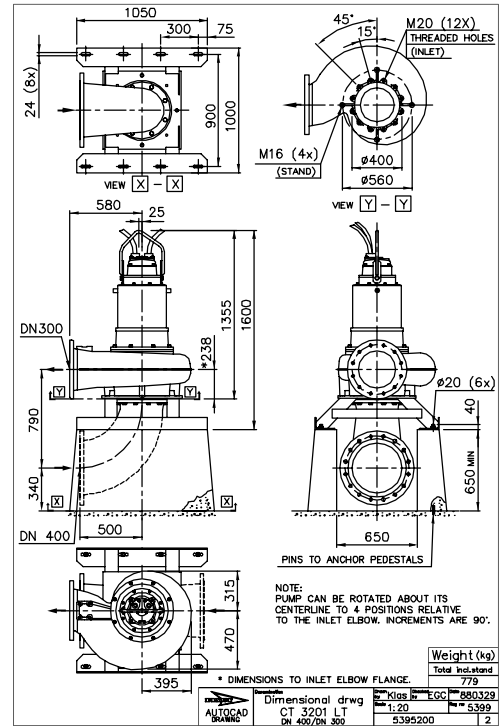
LT, P-installation



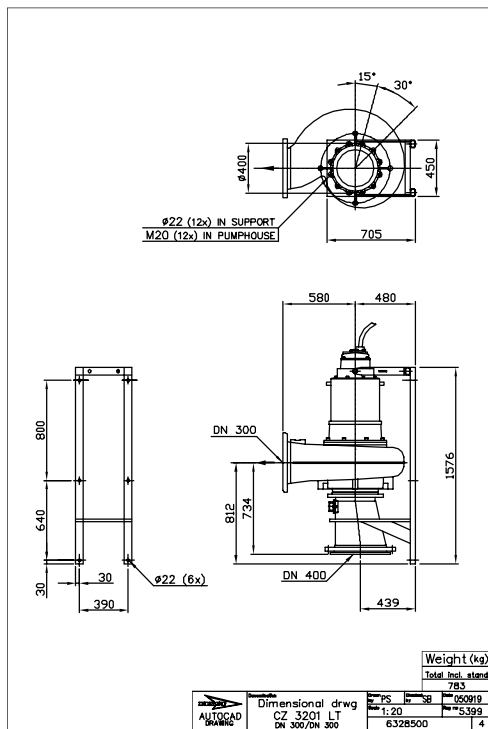
LT, S-installation



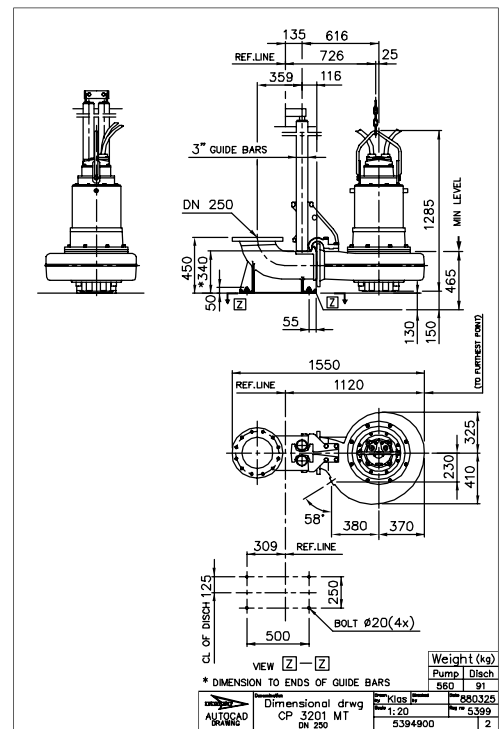
LT, T-installation



LT, Z-installation

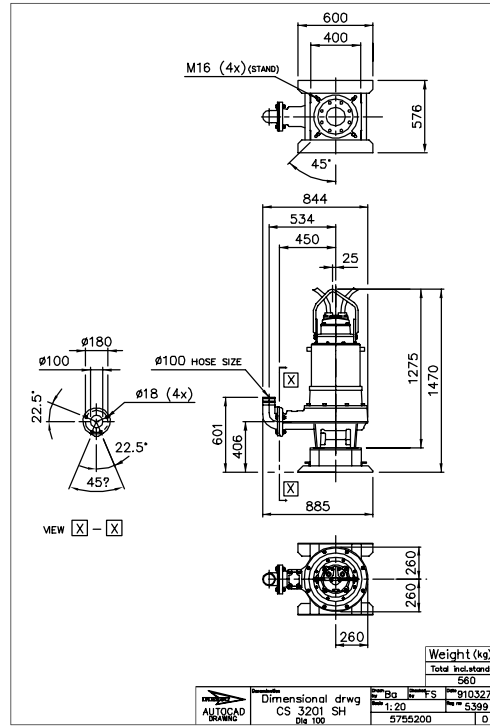
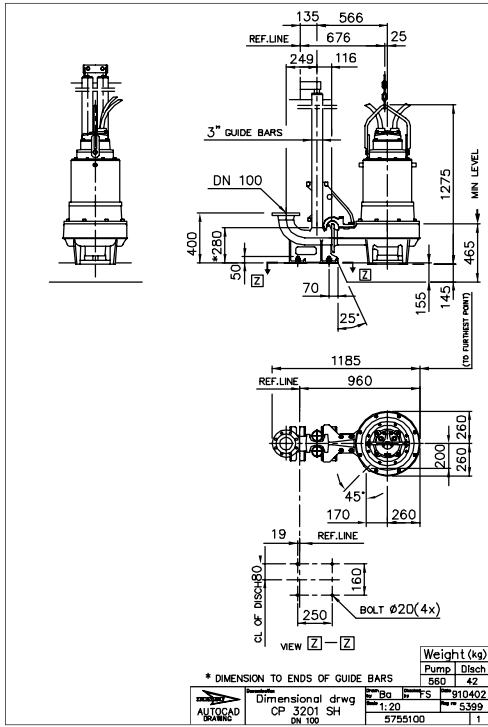


MT, P-installation



SH, P-installation

SH, S-installation



Xylem |'zīləm|

- 1) The tissue in plants that brings water upward from the roots
- 2) A leading global water technology company

We're 12,000 people unified in a common purpose: creating innovative solutions to meet our world's water needs. Developing new technologies that will improve the way water is used, conserved, and re-used in the future is central to our work. We move, treat, analyze, and return water to the environment, and we help people use water efficiently, in their homes, buildings, factories and farms. In more than 150 countries, we have strong, long-standing relationships with customers who know us for our powerful combination of leading product brands and applications expertise, backed by a legacy of innovation.

For more information on how Xylem can help you, go to xylem.com



Xylem Water Solutions AB
Gesällvägen 33
174 87 Sundbyberg
Sweden
Tel. +46-8-475 60 00
Fax +46-8-475 69 00
<http://tpi.xylem.com>

Visit our Web site for the latest version of this document and more information

The original instruction is in English. All non-English instructions are translations of the original instruction.

© 2011 Xylem Inc