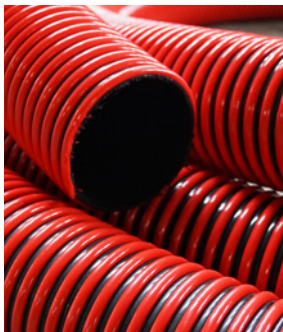


STUART GROUP LTD



HOSES & ACCESSORIES



WHAT CAN WE OFFER YOU?



Stuart Pumps has been operating in the water industry since 1982 both selling and hiring a wide range of water pumps including submersible, centrifugal, borehole, slurry and sewage ranging 2" to 24".

We are proud to be the "supplier of choice" for many customers looking for both new and used water pumps within the UK and worldwide.

We are an authorised distributor for Xylem/Godwin products in the UK & NI offering the full range of Dri-Prime diesel engine pumps along with electric drainage submersibles.

All your sales and rental needs can be accommodated by our highly skilled and experienced staff where we are in a position to offer the most beneficial and cost effective pump solutions for your application.

We also offer warranties on all plant (subject to terms, conditions and location) and provide technical with spares support where required.

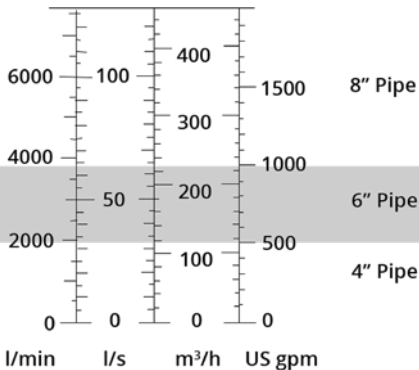
So why wait? If you have any water issues, contact us today and we will be more than pleased to offer our assistance.

CONTENTS

SUCTION HOSE	4-5	STRAINERS	12
DISCHARGE HOSE	6	BAND CLAMPS	13
CARBON STEEL HOSE MENDER	7	MPDE FITTINGS	14
BOLT AND GASKET KITS	7	SLURRY TANK FITTINGS	15
LEVER LOCK COUPLINGS	8-11	CONTRACTORS PUMPS	16

www.stuartpumps.co.uk | +44 (0) 1953 454540 | pumpsales@stuartgroup.info

FLOW DETERMINES PIPE SIZE

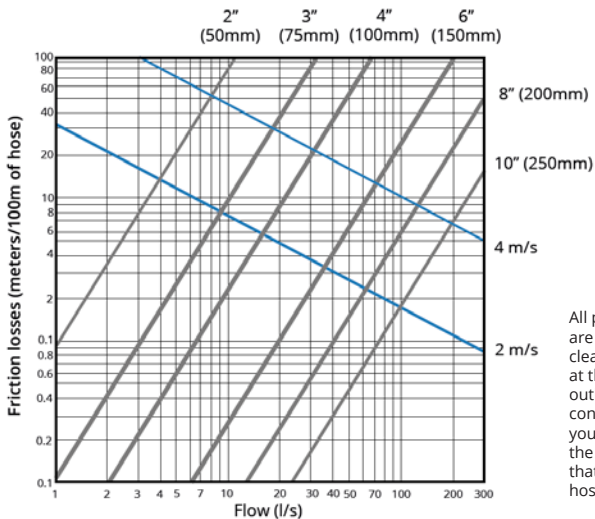


Liquid velocity is critical to keep solids in suspension. If velocity is too slow, solids drop out. If it's too fast, friction loss becomes an issue.

Determining the flow is the first step in designing a complete pump system because flow determines the size of the pipe. When flow is not known, calculate quantity and divide by the time required to move the liquid.

Flow	=	Quantity	÷	Time
l/min		Litres		Minute
l/sec		Litres		Second
m ³ /hr		Metres ³		Hour
gpm		Gallons		Minute

FRICITION LOSSES



All pump capacities are measured for clean water, directly at the discharge outlet. When connecting a hose, you must consider the friction losses that come from the hose size and length.

SUCTION HOSE

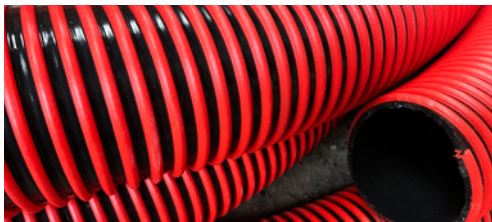
WIRE ARMoured SUCTION & DELIVERY

Heavy duty, rubber flexible suction and delivery hose. Available in 3 or 6m lengths complete with Bauer type quick release couplings.



Wire Armoured Suction & Delivery Hose		Price (£)	
Size ID	Working Pressure (BAR)	3 (m)	6 (m)
2"/50mm	8	-	65.00
3"/75mm	7	60.00	85.00
4"/100mm	6	80.00	120.00
6"/150mm	6	150.00	195.00
8"/200mm	4.5	240.00	-

AGRIFLEX TYPE HEAVY DUTY SUCTION PVC

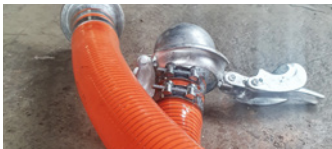


Agriflex type PVC hose is used widely in agriculture and vacuum tankers for transporting slurry and water. The hose works at a maximum pressure of 6 bar.

Agriflex Type Heavy Duty PVC Hose	Price (£)		
Size ID	6 (m)	20 (m)	per metre
6"/152mm	185.00	610.00	19.60

MEDIUM DUTY PVC

Any length available to suit your application. Often used for tanker slurry. Available from stock. Next day delivery.



Medium Duty PVC Hose		Price (£)	
Size ID	Working Pressure (BAR)	6 (m)	30 (m)
2"/51mm	7	45.00	110.00
3"/76mm	5	65.00	195.00
4"/102mm	5	90.00	295.00

PLAIN END PVC

Any length available to suit your application. Available from stock and next day delivery can be provided.



Plain End PVC Suction Hose	Price (£)	
Size ID	Per Metre	Per Coil - 30m
2"	2.70	POA
3"	5.10	POA
4"	9.80	POA

DISCHARGE HOSE

POLYETHYLENE POLY PIPE DISCHARGE

PE pipe is used for applications such as water mains, sewer mains, slurry transfer lines, rural irrigation, fire system supply lines, storm-water and drainage pipes. With smooth bore means less friction. Pressure Ratings from 4-7 Bar.



Polyethylene (PE) Poly Pipe - Discharge Hose	Price (£)	
Size ID	3 (m)	6 (m)
2"	-	60.00
3"	-	80.00
4"	-	90.00
6"	-	155.00
8"	-	267.00
12"	POA	-

LAYFLAT DISCHARGE

Layflat hose is designed to collapse upon itself for both ease of manual handling and storage. Often used for irrigation and water supply. Flexible, hardwearing and lightweight. 6 Bar pressure rated.



Layflat Discharge Hose	Price (£)			
Size ID	per (m)*	25(m)	50 (m)	100 (m)
2"	1.50	47.00	78.00	140.00
3"	2.00	65.00	100.00	165.00
4"	2.50	100.00	185.00	250.00
6"	4.00	150.00	250.00	400.00
8"	7.00	300.00	450.00	750.00

CARBON STEEL HOSE MENDER

Ideal for a quick connection or hose repair.



Description	OD	Price (£)
2" Carbon Steel Hose Mender	51.4mm	4.00
3" Carbon Steel Hose Mender	77.5mm	11.00
4" Carbon Steel Hose Mender	102.8mm	17.00
6" Carbon Steel Hose Mender	153.6mm	50.00
8" Carbon Steel Hose Mender	204.5mm	90.00

BOLT AND GASKET KITS

Complete bolt and gasket kit containing all required bolts, nuts and washers with a full face EDPM rubber gasket.

1 unit per joint

Part No.	Size ID	Bolt size	Flange table	Price (£)
FS3	3"/80mm	M16x70	PN16	£12
FS4	4"/100mm	M16x70	PN16	£13
FS6	6"/150mm	M20x70	PN16	£23
FS8	8"/200mm	M20x70	PN16	£33

Pricing for gasket only:

- 3" = £1.70
- 4" = £2.30
- 6" = £3.90
- 8" = £4.30
- 12" = £12.00



LEVER LOCK COUPLINGS

Galvanised steel, lever lock Bauer type couplings. Available from stock.

Sizes from 2" to 8" available on most fittings.



THREADED BSP



Threaded BSP	Price (£)		
	Male	Female	Complete Set
2"/50mm	11.00	8.00	19.00
3"/75mm	22.00	20.00	42.00
4"/100mm	28.00	22.00	50.00
6"/150mm	51.00	31.00	82.00

PN10 Flange	Price (£)		
	Male	Female	Complete Set
2"/50mm	26.00	18.00	44.00
3"/75mm	30.00	20.00	50.00
4"/100mm	48.00	38.00	86.00
6"/150mm	80.00	70.00	150.00
8"/200mm	190.00	180.00	370.00

PN10 FLANGE



BAUER COUPLINGS

Male Bauer includes Lever Clamp.
Female Bauer includes O Ring.



FLANGED 90° BEND

Size	Male (£)	Female (£)
3"/50mm	40.00	30.00
4"/100mm	55.00	40.00
6"/150mm	90.00	80.00
8"/200mm	POA	POA

90° & 45° Bend	Price (£)
Size	each
2"	22.00
3"	40.00
4"	47.00
6"	84.00
8"	175.00

90° & 45° BEND



Hose Tail	Price (£)		
Size	Male	Female	Complete Set
2"/50mm	6.46	3.84	10.00
3"/75mm	12.23	7.27	19.00
4"/100mm	15.30	10.90	26.00
6"/150mm	24.40	15.60	40.00
8"/200mm	55.50	39.50	95.00

HOSE TAIL



REDUCER

Reducer	Price (£)
Size	each
3" to 2"	30.00
4" to 3"	37.00
6" to 4"	68.00
8" to 6"	110.00

ENLARGER

Enlarger	Price (£)
Size	each
2" to 3"	35.00
3" to 4"	46.00
4" to 6"	79.00
6" to 8"	109.00



O'RINGS

O'Rings	Price (£)
Size	each
2"	0.34
3"	1.27
4"	1.65
6"	2.30
8"	4.50





END CAP

End Cap	Price (£)	
Size	Female	Male
2"	5.00	10.00
3"	9.50	19.00
4"	12.00	24.00
6"	24.00	45.00
8"	38.00	68.00



Y-UNION

	Price (£)	
Size	Female to Male Outlet	Male to Female Outlet
3"	68.00	65.00
4"	99.00	96.00
6"	185.00	180.00
8"	305.00	295.00



STRAINERS

Wastewater pumps are designed to handle a certain size solid so to prevent the possibility of any larger solids entering the pump it is imperative a strainer is fitted on the suction hose. Subject to the pump solid handling characteristic we offer range of strainers with different hole sizes to suit your application.



Strainer with Male Bauer Coupling	Hole Size (mm)	Price (£)
Size		each
2"/50mm	20	20.00
3.5"/89mm	10	22.60
3.5"/89mm	35	48.00
4"/100mm	20	46.00
4"/100mm	50	46.00
6"/150mm	20	67.00
6"/150mm	50	67.00
8"/200mm	20	130.00
8"/200mm	75	130.00

Male Bauer Foot Valve with Strainer	Price (£)
Size	each
3"	66.00
4"	98.00
6"	175.00
8"	270.00



Tin Can Strainer with Male Hose Tail	Price (£)
Size	each
2"	10.50
3"	15.00
4"	24.00
6"	60.00

BAND CLAMPS

Band clamps are designed to secure a watertight coupling or fitting inside hose.

Hose Band Clamps	Suitable For	Price (£)
Size	Hose Type	each
56-59mm - 2"	PVC/SWA	1.20
80-85mm - 3"	PVC only	2.00
86-91mm - 3"	PVC/SWA	2.00
104-112mm - 4"	SWA only	3.50
113-121mm - 4"	SWA only	3.50
162-174mm - 6"	SWA only	4.00

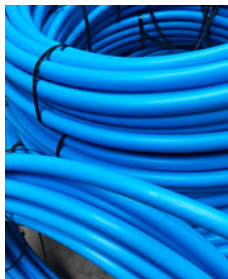


Hose Worm Drive Clamps	Suitable For	Price (£)
Size	Hose Type	each
80-85mm - 3"	LAYFLAT	1.25
98-103mm - 4"	LAYFLAT	1.30
149-161mm - 6"	LAYFLAT	1.95
201-213mm - 8"	LAYFLAT	3.00

Steel Spiral PVC Pipe Band Clamp	Price (£)
Size	each
4"	9.00
6"	14.00
8"	16.00

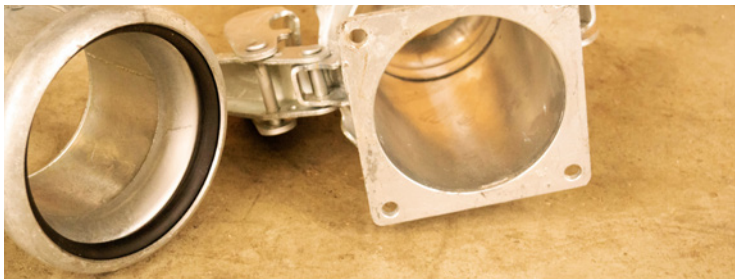
MDPE FITTINGS

A range of MDPE couplings are available for the installation of borehole pumps. Stuart Pumps Ltd stock a wide range of Grundfos SQ borehole pumps which are ideal for both domestic and small irrigation applications. In stock, available for next day delivery.



Description	Price (£)
32mm x 100m Coil Blue MDPE Pipe	POA
32mm x 50m Coil Blue MDPE Pipe	POA
32mm x 1.1/4" Male BSP Compression Adaptor	2.18
32mm x 1" Male BSP Compression Adaptor	2.14
32mm x 1" Female BSP Compression Adaptor	2.14
32mm 90° Compression Elbow	3.51
32mm Compression x 1" Female BSP Ball Valve	15.00
32mm Straight Compression Adaptor	3.58
32mm Equal Compression Tee	5.18
32mm Pipe Clamp	0.74

SLURRY TANK FITTINGS



Description	Price (£)
6" Female Bauer MZ Flange	50.00
6" Male Bauer MZ Flange	70.00
6" PN16 Flange to MZ Flange Adaptor	112.00
6" Knife Gate Valve Handle Only	25.00
6" Knife Gate Valve MZ Flange	210.00
6" MZ Flange Gasket	3.80

CONTRACTOR'S PUMPS

SEMI-TRASH

The TDS models are self-priming centrifugal, semi trash pumps with Honda engines. All models have aluminium pump housings for portability and silicon mechanical seals, cast iron volutes, cast iron impellers and oil alerts. Hose couplings, washers and clips are included. Hose sold separately. 20mm solids handling.



Model No.	Fuel	Outlet (mm)	Flow (l/min)	Solids (mm)	Head (m)
TDS-50HA	Petrol	50	780	20	23
TDS-80HA	Petrol	75	1150	20	23

TRASH

The TED series are heavy-duty trash pumps of traditional design. The pump housings incorporate inspection covers, which can be quickly released by undoing two hand nuts, thus allowing ready access to the impeller. Hose couplings, washers and clips are supplied with each pump. Hose sold separately. 25mm solids handling and manual output 35mm where stated.



Site trolley available at additional cost

Model No.	Fuel	Outlet (mm)	Flow (l/min)	Solids (mm)	Head (m)
TED2-50HA	Petrol	50	800	25	26
TED2-80HA	Petrol	75	1300	35	30
TED2-100HA	Petrol	100	2000	35	23

DRYMAX

DryMax are automatic priming, diaphragm pumps with Yanmar L48E electric start engines. They are fitted with nitrile rubber diaphragms and check valves, so priming is unnecessary and indefinite dry running is permissible. Designed for site pumping, they are suitable for fluids containing sand, mud, sludge, sewage and suspended spherical solids up to 40mm. Heavy duty, yet lightweight, the pump ends are in aluminium, they use needle bearings and have oil filled gear units.



DryMax2



DryMax3

Model No.	Fuel	Outlet	Flow(l/min)	Head (m)
DryMax2	Diesel	2"	190	17
DryMax3	Diesel	3"	330	17

POLY SERIES

The Poly series are self-priming centrifugal pumps for the transfer of non-abrasive, but aggressive, liquids that would normally cause corrosion of the rubber, aluminium and cast iron components found in conventional engine driven pumps. They are constructed from glass reinforced polyester, with stainless steel fasteners and EPDM rubber components. This standard construction will handle most detergents, many agricultural chemicals and salt/sea water.



Model No.	Fuel	Outlet	Flow(l/min)	Head (m)
25P	Petrol	50mm	870	25
35P	Petrol	75mm	984	25
25D	Diesel	50mm	870	25
35D	Diesel	75mm	984	25

SUBMERSIBLE PUMPS



LB

These models incorporate a dual position outlet port, to enable the user to position the outlet hose horizontally or vertically and avoid it kinking. A choice of either 0.48kW or 0.75kW motors.



LSC

This pump is able to pump water down to 1mm, which makes it suitable for pumping large or small areas of nuisance water found on flat surfaces.



HS

Single-phase agitator pumps suspend solids when pumping sand and debris. Horsepower ranges from 1/2 hp to 1 hp and in 2-inch or 3-inch discharge sizes.

Model No.	Manual/ Auto	Outlet	Max Head	Flow (l/min)	kW	Voltage
LB-480	M	50mm	11m	225	0.48	110-230
LB-480	A	50mm	11m	225	0.48	110-230
LB-800	M	50mm	15m	310	0.75	110-230
LB-800	A	50mm	15m	310	0.75	110-230
LB-1500	M	2"	17.5m	420	1.50	230
LCS 1.4S	M	25mm	11m	170	0.48	110-230
LCS 1.4S	M	50mm	11m	170	0.48	110-230
HS2.4S	M	50mm	12m	205	0.40	110-230
HS2.4S	A	50mm	12m	205	0.40	110-230
HS2.75S	M	50mm	18m	230	0.75	110-230
HS2.75S	A	50mm	18m	230	0.75	110-230
HS3.75S	M	50mm	18m	310	0.75	110-230
HS3.75S	A	50mm	18m	310	0.75	110-230

USED PUMPS

Stuart Pumps offer a range of used pumps for sale, with manufacturers including Godwin, Selwood, Sykes, SPP, Hidrostral and others. All of our used pumps are fully tested and serviced to be in good working order. If necessary repainted to our standard red finish (other colour options available at extra cost).

These can be used for various applications including flood relief, ground water control, mine dewatering, well point dewatering, industrial sludge pumping, emergency pumping and sewage over-pumping.

Normally 3 month return to base warranty is given for used pumps sold within mainland England, Wales and Scotland excluding the following postcodes: FK, KY, PA, PH, DD and the Highlands. Please contact us for further details.

GODWIN HL150M



SELWOOD D80



SPP AL100M



NEW PUMPS

We are an authorised distributor of Xylem/Godwin. We offer Xylem's complete range of water pumping solutions for your site requirements utilising Godwin, Flygt and Lowara pumps for applications ranging from industrial, construction, tunnelling and municipal. We hold a selection of CD HushPac Dri-Prime in stock. Also stocking spares for Xylem/Godwin products.

XYLEM GODWIN

We offer pumps ranging from 50mm to 600mm with engines Yanmar, Perkins, JCB and Caterpillar. CD series enable high volume and medium head, HL series provides medium volume and high-head. Stage V available.



XYLEM FLYGT

Flygt pumps and mixers are ideal for everything from the toughest applications in wastewater, storm water, effluent, dewatering, to lightly contaminated water and clean water applications.

We are proud to offer customers both reliability, with our high-quality, clog-free pumps and mixers, and expertise in finding the right solution to meet their specific needs.



XYLEM LOWARA

Lowara pumps, drives and packaged solutions like pressure booster sets and wastewater lifting stations are all developed with low life cycle cost in mind. That means robust, high efficient, easy to install and service products with a long service life.



**BUY
USED
PUMPS**

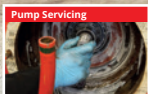
**BUY
GENUINE
SPARES**

**ASK
US
HOW**

www.stuartpumps.co.uk | pumpsales@stuartgroup.info | +44 (0) 1953 454540



We are an authorised distributor for Xylem/Godwin



Head Office
Stuart House,
Hargham Road,
Shropham, Norfolk
NR17 1DT



North East
Middleplatt Road
Immingham
DN40 1AH



West Midlands
Diglis Trading Estate,
Navigation Road,
Worcester
WR5 3DE



North West
Park Industrial Estate,
Gaskell Street,
St Helens
WA9 1PX

Please be aware prices change on a regular basis and that we reserve the right to change the price without prior notice.