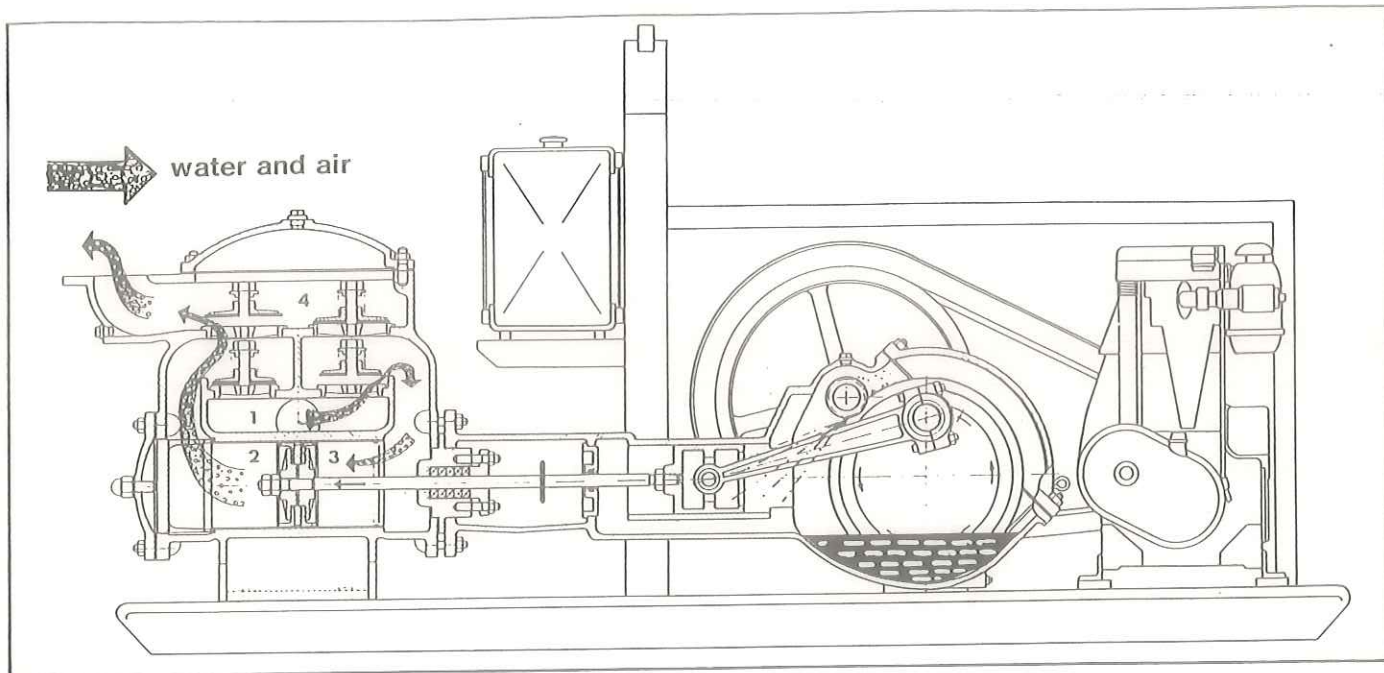


Design

Horizontal 4 and 6 inch quadruple-acting duplex piston pumps.



Drive end:

Splash-lubricated helical-toothed gearing ensures proper lubrication of all moving parts and requires no maintenance. Gearing fitted with dust-proof cover.

Water end:

Pistons: disc-pistons with double cup leathers.

Cylinder liners made of high-quality stainless-steel, quickly and easily replaceable.

Piston rods of chrome molybdenum steel.

Suction and discharge valves are spring-loaded flat valves with rubber discs. Valve guides in chrome

molybdenum steel; valve discs, valve weights and seats in brass.

The piston rod seal takes the form of a stuffing box with graphite packing.

Materials:

Pump end, drive end, covers and pistons are made of high grade Meehanite cast-iron.

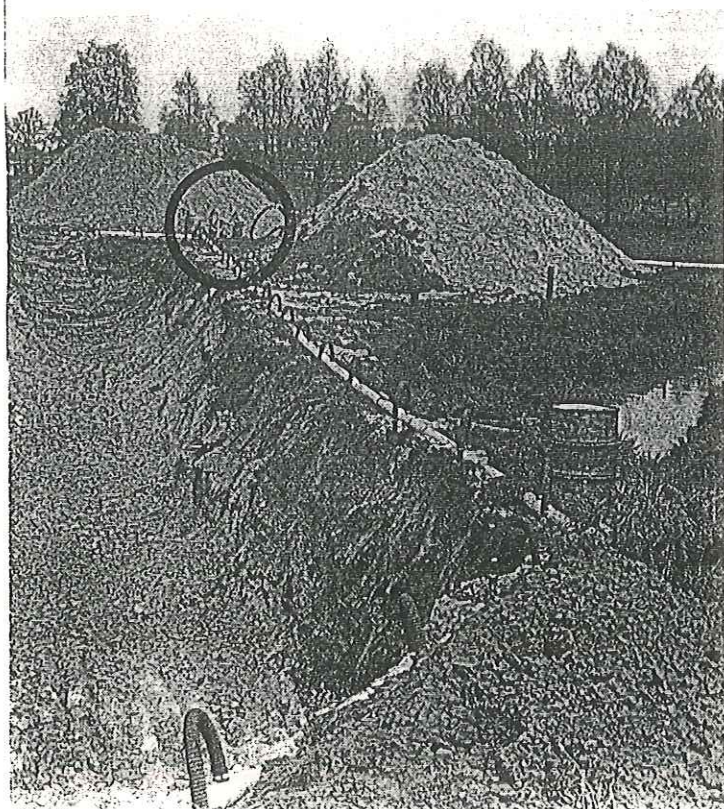
General:

Three covers permit quick and easy inspection of all moving parts.

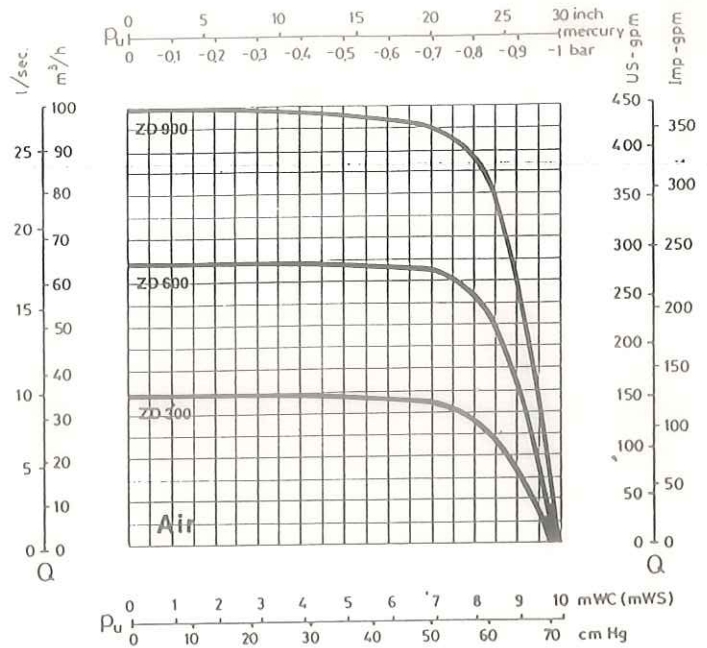
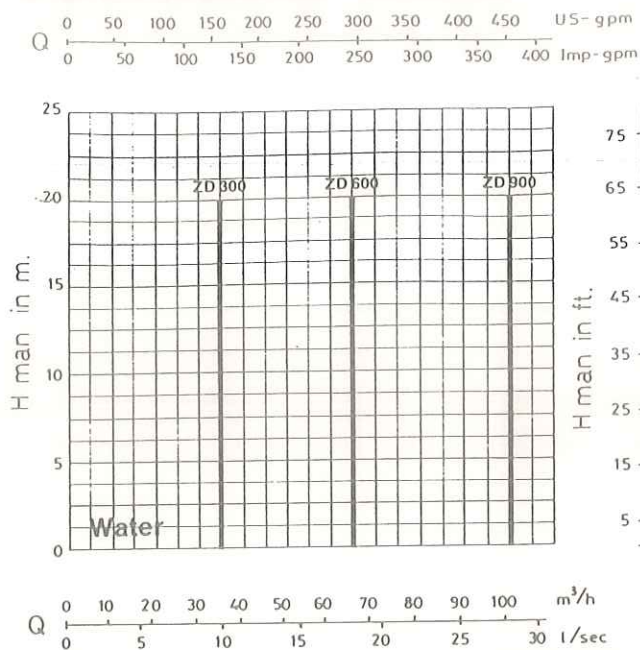
All wearing parts are readily replaceable.

Advantages

- constant water and air flow rates regardless of suction and delivery head
- very high efficiency
- negligible maintenance cost
- simple but robust design
- highly reliable operation
- no additional vacuum pump required
- pulsating priming
- very low fuel consumption
- resistant to sea and brackish water



Technical Data



Pump type		ZD 300	ZD 600	ZD 900
Water capacity max.	m ³ /h	35	65	100
Air capacity max.	m ³ /h	35	65	100
Vacuum up to	m	9.6	9.6	9.6
Manometric head	m	20	20	20
Suction connection	mm	100	100	150
Discharge connection	mm	100	100	125
Speed	rpm	1500	1500	1500
Electric motor	kW	4 Y-△	5.5 Y-△	7.5 Y-△
Diesel engine: make HATZ	type	E80G	E89G	E108
	hp	5	7.5	11
Fuel tank capacity	ltr.	90	90	90
Starting		manual	manual	manual

Weights and dimensions

Pump type	ZD 300		ZD 600		ZD 900	
	electric	diesel	electric	diesel	electric	diesel
Dim. skid-mounted l x w x h	1.5x0.7x1.3	2.3x0.7x1.3	2x0.7x1.3	2.7x0.7x1.3	2x0.7x1.3	2.8x0.7x1.3
Weight skid-mounted	510	650	825	1025	900	1075
Cube case-packed	1.22	2.71	2.55	3.33	2.58	3.4
Weight case-packed	600	800	975	1200	1050	1250
Dim. trailer-mounted	1.7x0.9x1.3	2.4x0.9x1.3	2.3x0.9x1.3	2.8x0.9x1.3	2.3x0.9x1.3	2.8x0.9x1.3
Weight trailer-mounted	675	815	1000	1150	1075	1200
Cube case-packed	2.57	3.58	3.34	4.13	3.34	4.22
Weight case-packed	825	1000	1175	1400	1250	1450

Subject to alterations

Drive

Electric motor:

Three phase a.c. motor to IEC-standard, 380 V, 50 Hz, B 3, IP 44, with star-delta starter, with plug and socket.

Diesel engine:

HATZ diesel engine, with manual start.

Assembly

Skid-mounted:

Pump with V-belt transmission and belt guard.

Pump and motor on welded steel skid, with lifting beam and hook lug.

Trailer-mounted

As above, but mounted on single-axle trailer with pneumatic tyres, removable towbar and support legs; suitable for site traffic.

STUART PLANT LTD.

Stuart House, Crows Hall Lane,
Attleborough, Norwich NR17 1AD
Telephone (01953) 454540 (10 lines)
Fax (01953) 456968